



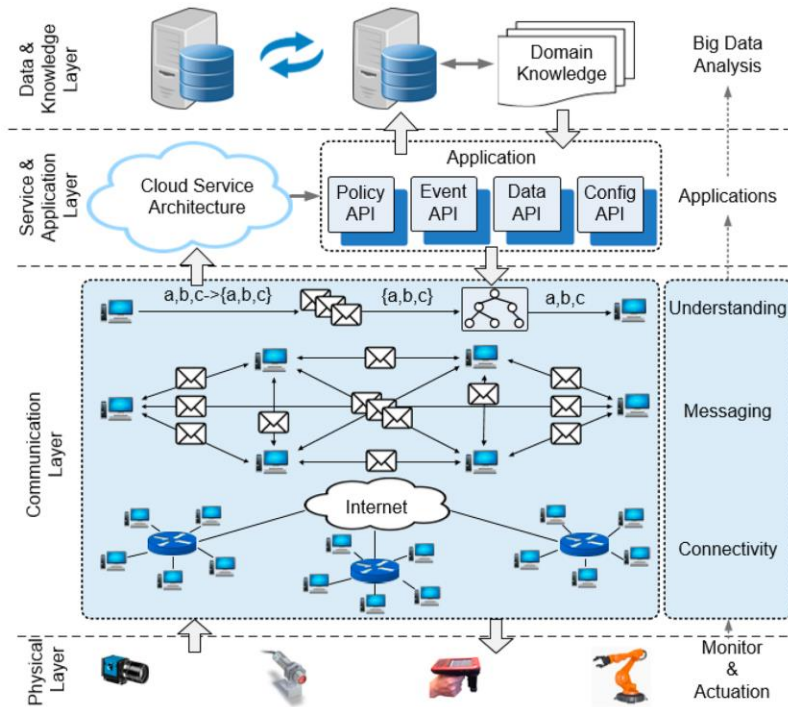
ATOMATION.net

*Giving Utility  
Equipment a Voice*

A÷OMAT÷ION

Atomate It!

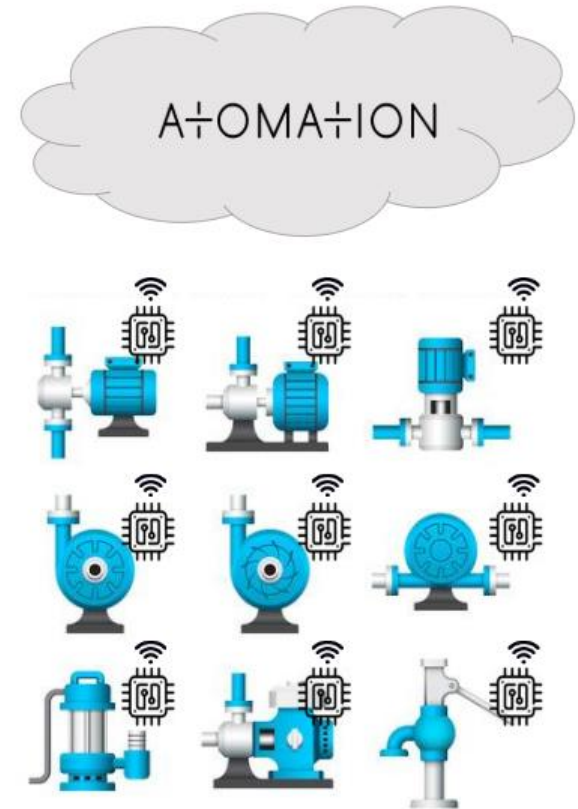
# Automation vs. A÷OMA÷ION



M2M Automation  
Top Down  
Approach

VS.

Distributed  
Intelligence  
Approach



What if Things Talked Only When They Had Something Interesting To Say?

# The A+OMAT+ION\$olution

Atomate It! We easily add Atoms to legacy devices, giving every thing a voice.

## Smart

Uses onboard sensors with an individualized object profile to understand normal operational behavior and communicate only when necessary

## Simple

Easily attaches to any object regardless of age or type and transmits information wirelessly to our cloud without additional customer IT infrastructure

## Scalable

Flexible, cost-effective solution that is quick to deploy and configure



# Electrical Outages Continue to be a Major Problem

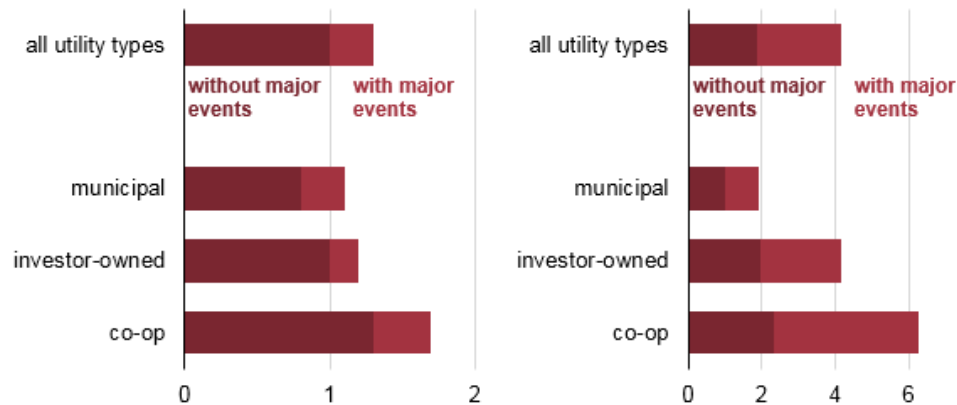


## 2017 Statistics

- 64 major outages (>50000 customers affected) due to severe weather
- ~47M customers affected (~610K in Missouri)
- Average duration: 55 hours

Source: US Energy Information Administration

Average electric power service interruptions per customer by utility type, 2016  
frequency (number of instances)      total duration (hours)



- Major events make up less than 20% of total interruptions but make up over 50% of average outage duration
- “Regular” events still involve significant outage duration
- Co-Ops facing the toughest challenges due to low meter density



# Preventative Maintenance Helps But Equipment Still Fails



# Smart Grid Helps But Manual Inspection/Triage Still Required

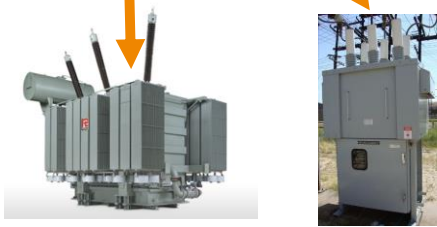
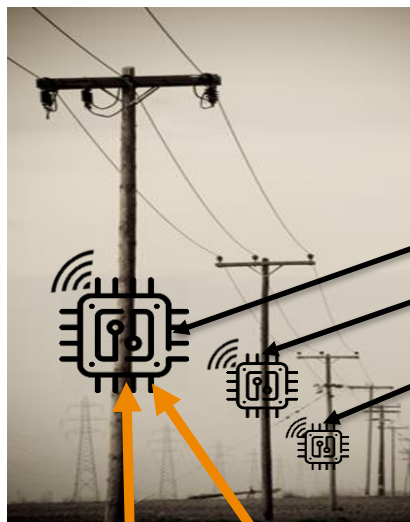


“There is no way to instantly pinpoint the location of a fault on a line segment that cannot be automatically restored. These faults are typically located by linemen getting into a utility truck and driving around the neighborhood inspecting every part of the line segment.”

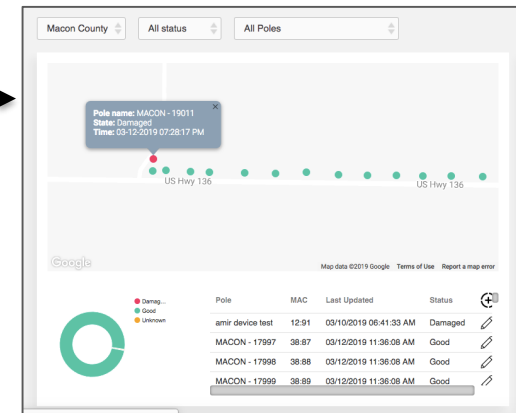
Source: Puget Sound Electric

## What If Equipment Could Talk?

# Introducing the Atomation Utility Solution



Atomation  
Cloud  
Database



Atomation or Customer  
Dashboard

- See problems before failure
- Effectively dispatch crews
- Increase customer satisfaction
- Scalable with no single point of failure
- Data collection and long-term analytics

Resilient, Secure and Instant Visibility Requiring No New Infrastructure



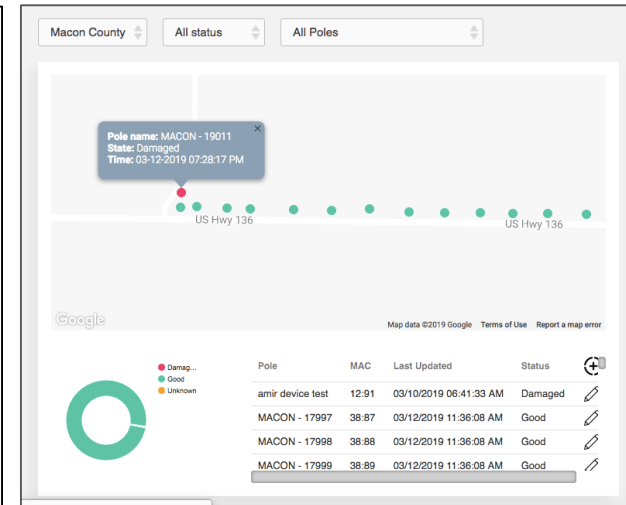
# Atomation Utility Pole Atom is the Heart of the Solution



- Pole Normal
- Pole Power Alarm
- Pole Fire Alarm
- Pole Tilt Alarm
- Pole Fall Alarm
- Pole Impact Alarm
- Battery Low Alert



- Self-calibrating
- Customizable thresholds
- Communicates with other Atoms
- Positive validation of repairs



- Real-time incident reporting
- Location drill down
- Reports by area & circuit

Increases Grid Intelligence Reducing Triage and Response Times



# Inside the Utility Pole Atom

Sensors & Control Board



Cellular Modem Board &  
LTE-M SIM Card

- Sealed enclosure with no maintenance
- Self-calibrating
- Bluetooth Low Energy communication to mobile devices and other Atoms
- LTE-M cellular communication to the cloud
- GPS location
- Circuit designed to work between -40 and +150°F
- 10 year battery life with low battery level alerting

# Simple Field Installation



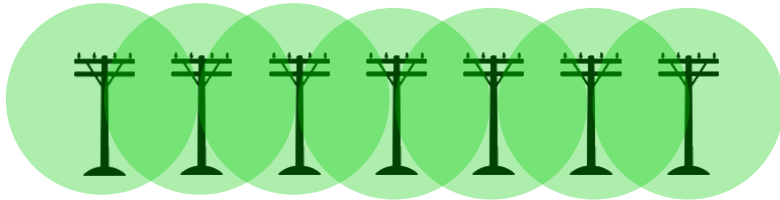
“As we calibrate the unit, going through the steps of calibration are simple. With one push of the button, the Atom is calibrated.”

*Allan Branstetter  
Director, Risk Management & Training*

- Can be mounted at any height (recommend 10-12' from ground)
- Self-calibrating: no need for level or plumb installation
- Configurable pole description database
- Automated connection and registration

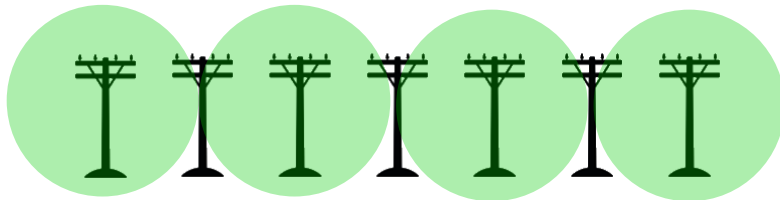
# Flexible Deployment Scenarios

## 1 Atom on Every Pole



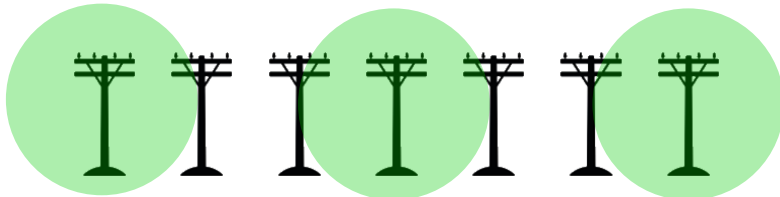
- Most complete coverage
- All failures detected for every pole
- Best for critical infrastructure

## 1 Atom on Every Other Pole



- Impact detected for all poles (imputed for non-Atom poles)
- Tilt/down/power detected every other pole

## 1 Atom on Every Third Pole



- Impact detected for all poles (imputed for non-Atom poles)
- Tilt/down/power detected every third pole
- Best for low criticality distribution lines

# Demonstration: Impact, Tilt and Down

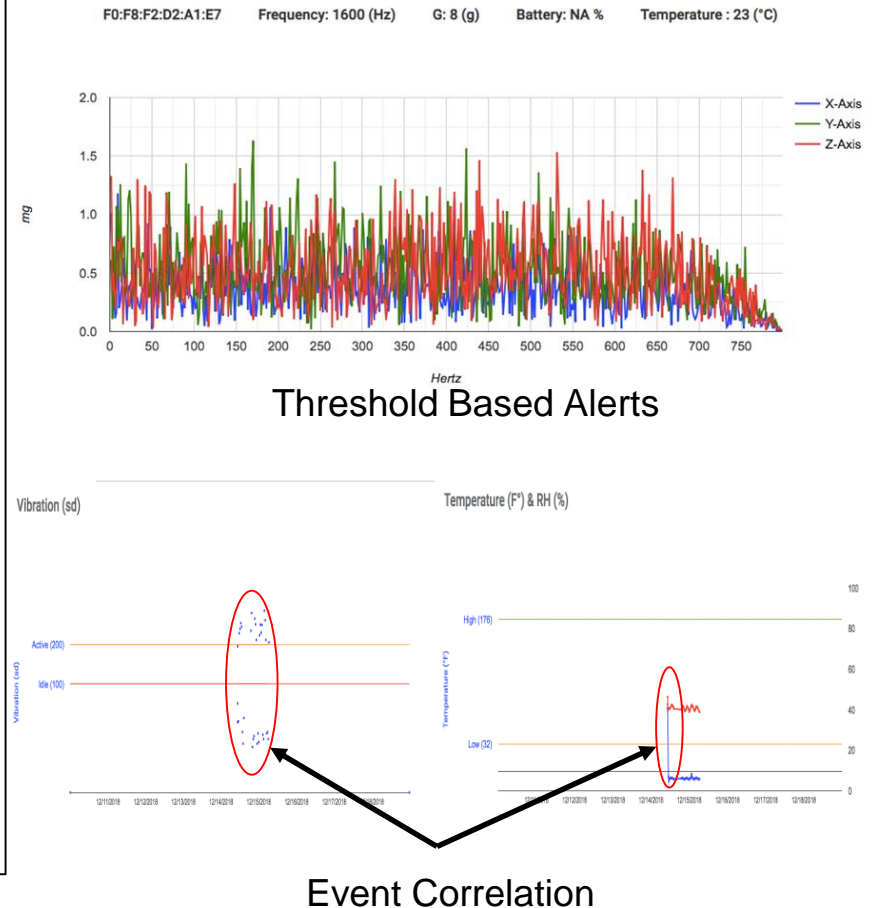




# Atomation Machinery Atom Extends Solution

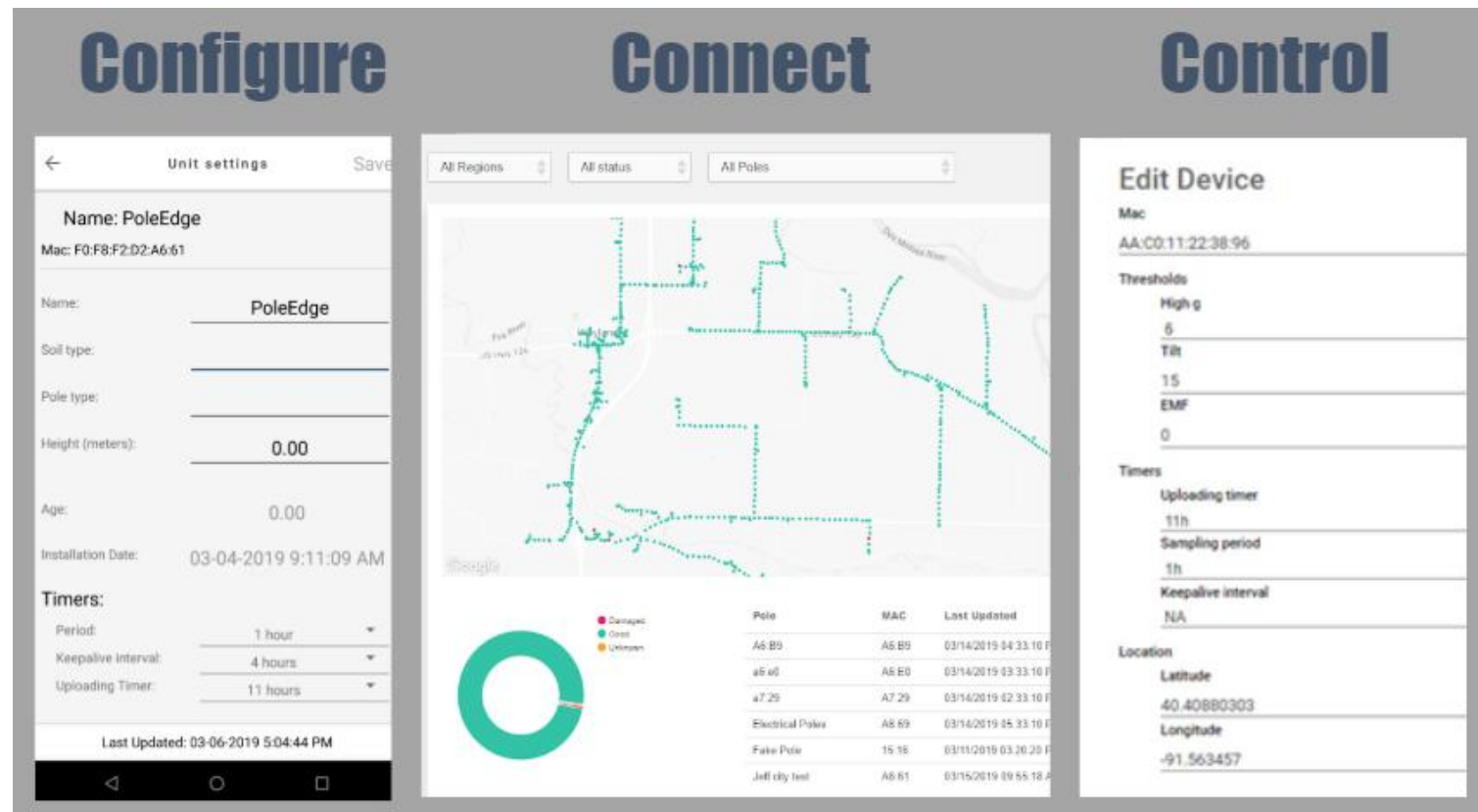


- Sealed enclosure with no maintenance
- Attaches magnetically to equipment
- Uses temperature and vibration “normal” signature to detect issues
- Bluetooth Low Energy communication to Utility Pole Atom/Gateway
- 3 year battery life



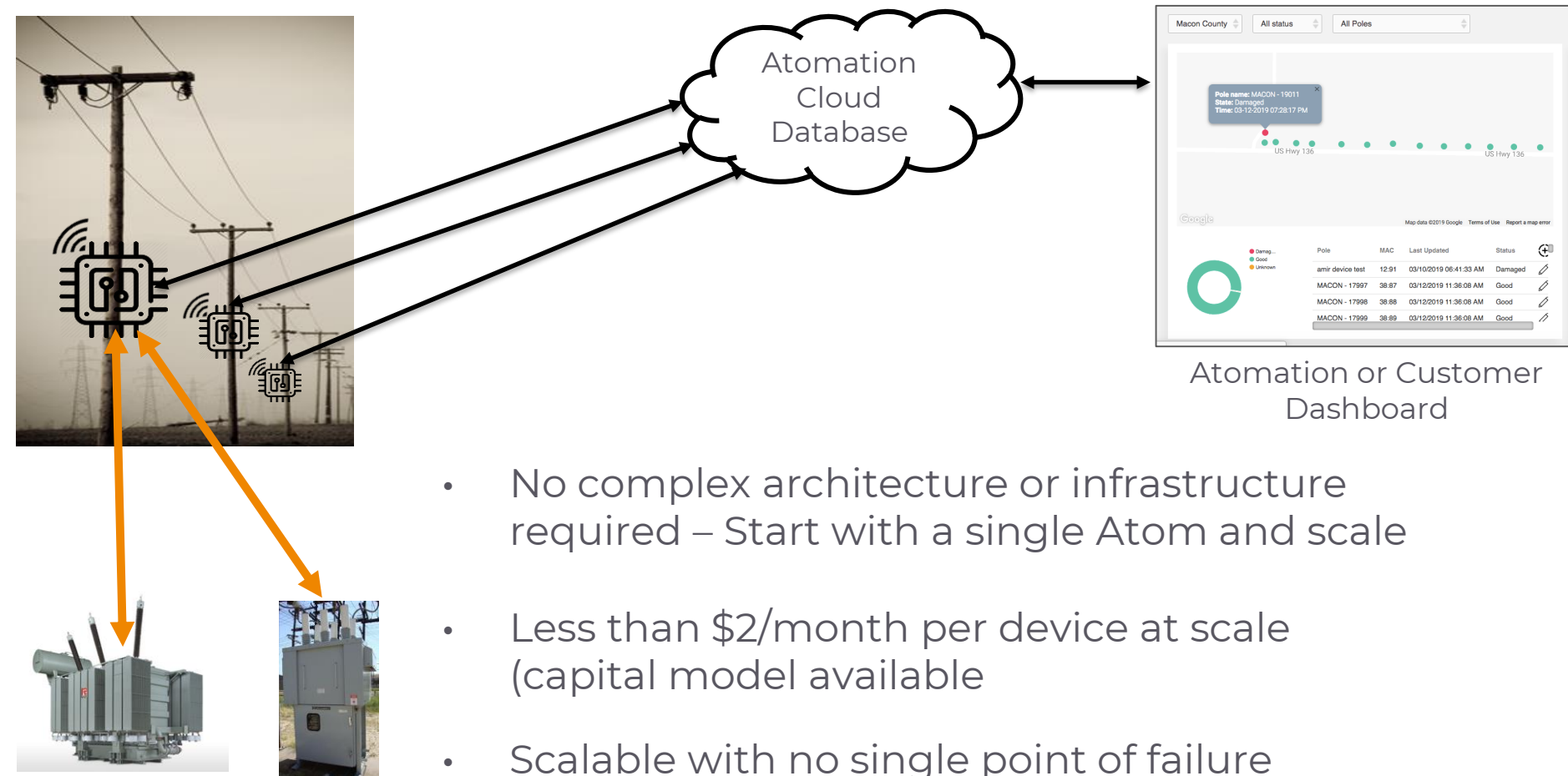
Simple “Early Warning” For Utility Equipment

# Central Device Management For Easy Management



- Configurable thresholds & reporting intervals
- Email and SMS Text Alert System
- Individual or bulk updates

# End Result: A Resilient Web of Information



Resilient, Secure and Instant Visibility Across Your Environment

ATOMATION.net

# Thank You

Contact:

Steve Hassell  
[steve@atomation.net](mailto:steve@atomation.net)

Guy Weitzman  
[guy@atomation.net](mailto:guy@atomation.net)

# A÷OMATION

Atomate It!